



Objet Geometries Ltd

www.objet.com

[Customer Support](#)

Digital Material™ Package No. 2 Software Update for Connex500 Printers

1. Purpose

This document provides instructions for installing the DMPack2 software update for Connex500 printers (on server and client workstations only).

2. Background

Objet has introduced a new digital material package: DMPack2.

In this DM package the following model materials are combined:

- TangoPlus™ (FullCure®930) and VeroWhite™ (FullCure®830)
- TangoBlackPlus™ (FullCure®980) and VeroWhite™ (FullCure®830)

The DMPack2 software update makes 18 new digital material combinations available for use.

This software update enables printing parts with the following digital material combinations.

Material Cartridges	Primary/Secondary	New DM Combinations	Benefits
TangoPlus & VeroWhite	Primary: TangoPlus Secondary: VeroWhite	DM _9740_Shore40 DM _9750_Shore50 DM _9760_Shore60 DM _9770_Shore70 DM _9785_Shore85 DM _9795_Shore95	Rubber-like materials. A variety of Shore Scale A values, from Shore 27 (Tango Plus) through 40 to Shore 95 along with high elongation at break and high tensile tear resistance values for simulating the performance of rubber.
	Primary: VeroWhite Secondary: TangoPlus	DM _8410 DM _8420 DM _8430	New rigid digital material combinations with increased elongation at break and impact resistance as required when simulating final products made of commodity plastics.
TangoBlackPlus & VeroWhite	Primary: TangoBlackPlus Secondary: VeroWhite	DM _9840_Shore40 DM _9850_Shore50 DM _9860_Shore60 DM _9870_Shore70 DM _9885_Shore85 DM _9895_Shore95	Rubber-like materials. A variety of Shore Scale A values, from Shore 27 (TangoBlackPlus) through 40 to Shore 95 along with high elongation at break and high tensile tear resistance values for simulating the performance of rubber.
	Primary: VeroWhite Secondary: TangoBlackPlus	DM _8510_Grey25 DM _8520_Grey40 DM _8530_Grey60	New rigid digital material combinations with increased elongation at break and impact resistance as required when simulating final products made of commodity plastics.

Applications:

Suitable applications for the new DM combinations include:

- For rubber-like materials:
Prototyping of rubber-like products, simulating elastomers at different Shore values in applications such as: soft-touch over mold grips, functional buttons, working hinges, models that withstand repeated bending and flexing, wires and cables in electrical applications, airbag covers, grips and handles, plugs, seals, athletic footwear, pulleys, gaskets, shock absorption models.
- For rigid materials:
Prototyping of commodity plastic products in applications such as: snap-fits, labeling, texture and imprints, medical applications, packaging, gardening equipment, irrigation (piping), cosmetics, detergents, domestic appliances.

3. Special Instructions

1. The printer server and all client workstations must be updated.
Note: On client workstations, this material software update can also be used for preparing print jobs for Connex350 printers.
2. Ensure that the Objet Studio and printer control software versions meet the requirements listed on the Objet website at:
http://www.objet.com/Pages/Objet_Download_center/DMPack2_Connex500_20090601_Ver_001/
3. To fully benefit from the new digital material combinations that DMPack2 offers, you need to install both the TangoPlus and the TangoBlackPlus software updates available at:
http://www.objet.com/Pages/Objet_Download_center/Software_Updates.
4. If you are installing this software update immediately after the installation of Objet Studio, you must open Job Manager at least once before you install this software update.

4. New Features

The software update adds the new digital material combinations to the material selection list the Objet Studio software.

5. Known Bugs

None

6. Notes

None

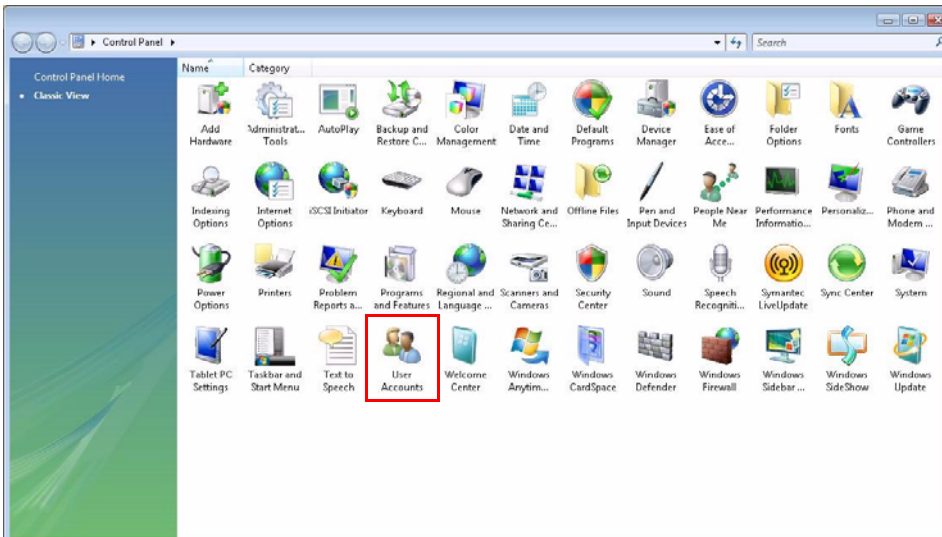
7. Installation Instructions

User Account Configuration (for Windows Vista® only)

Prior to installing this software update, you must perform the following configuration on all client and server workstations running Windows Vista operating system.

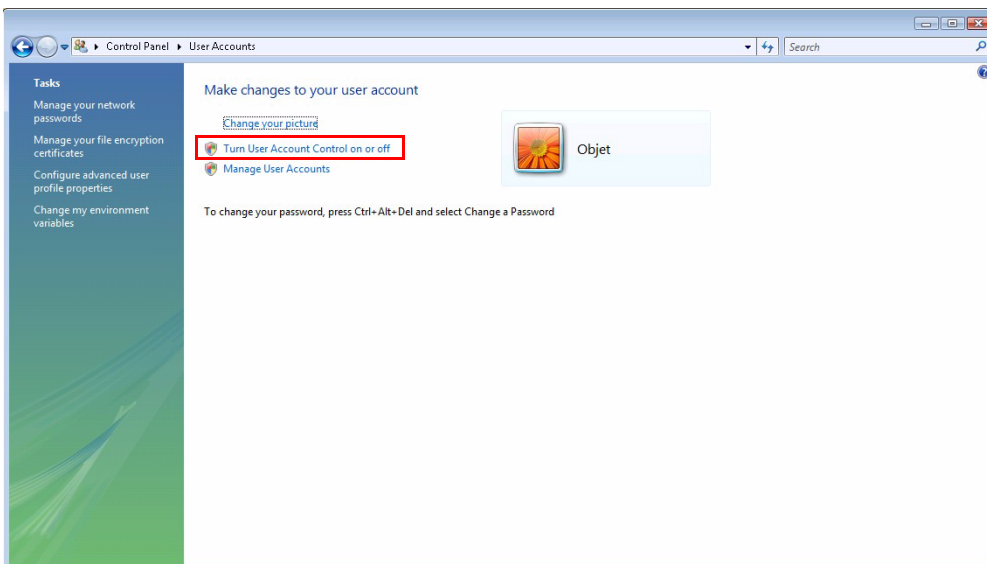
1. Save any open files and close all applications.
2. Open the Start menu and select Control Panel.

The *Control Panel* window appears.

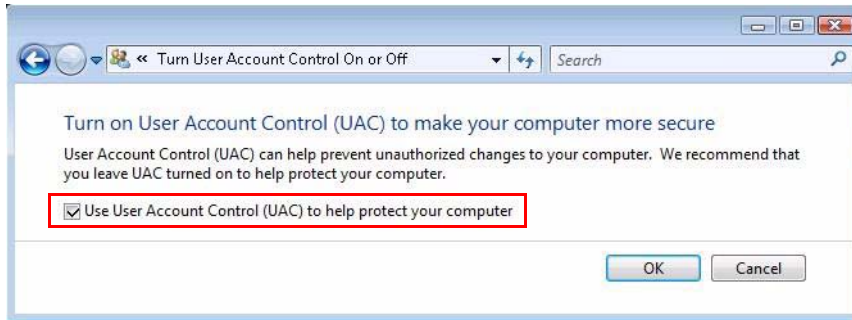


3. Select User Accounts.

The following window appears:





- Click "Turn User Account Control on or off".
The following window appears.

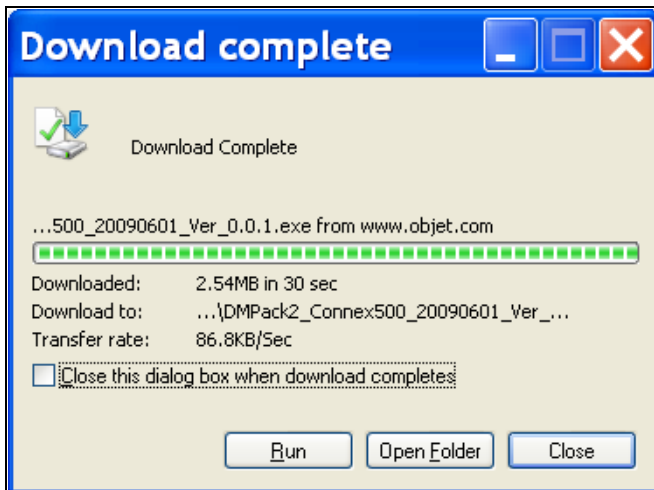


- Clear the checkbox and click OK.
- Restart the computer.

Instructions for Server and Client Workstations Only

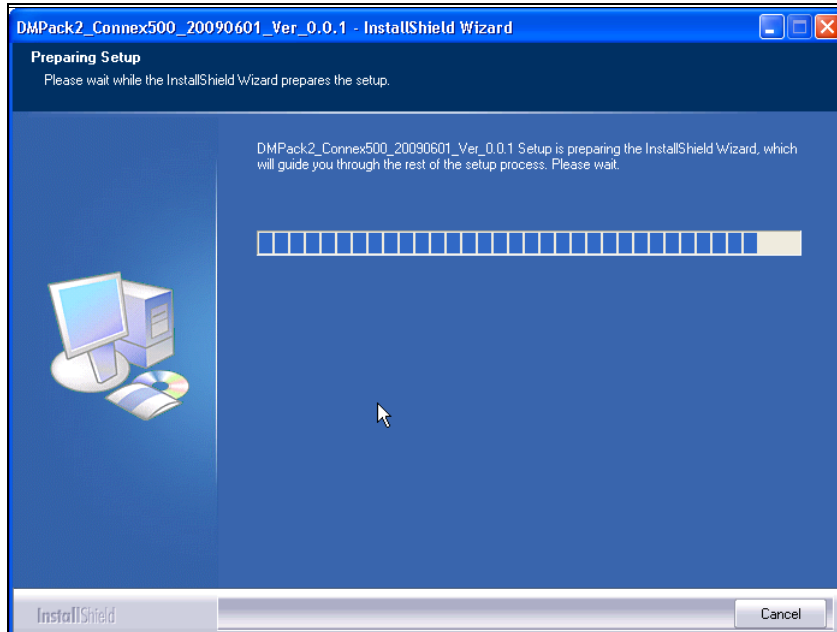
To install DMPack2 software update:

- Close the Objet Studio application.
- Click the *Stop Job Manager* icon  on the desktop.
or
In the taskbar, right click on the *Job Manager* icon  and select **Stop Job Manager**.
- Download the DMPack2 software update for Connex500.
- Save the *exe* file to a desired location. When the download is complete, the following screen appears.

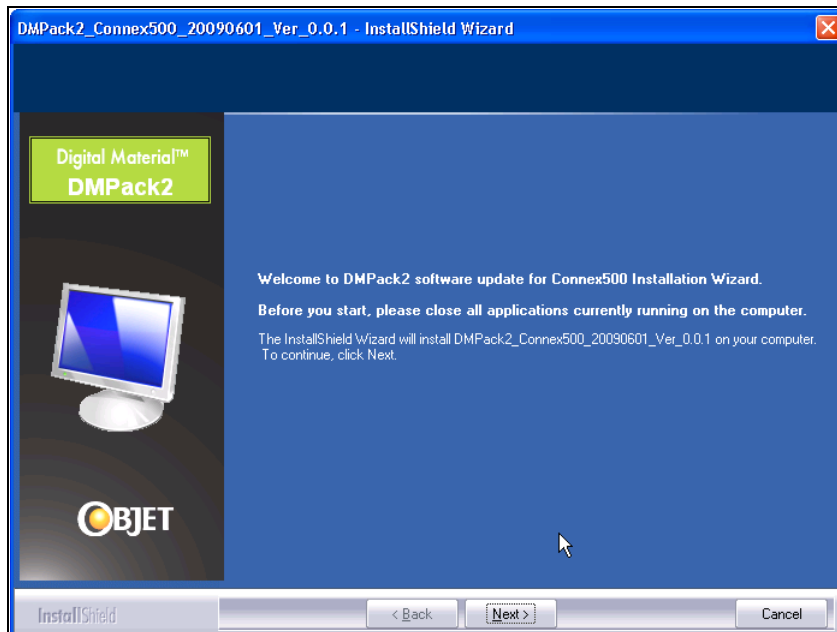


5. Click Run.

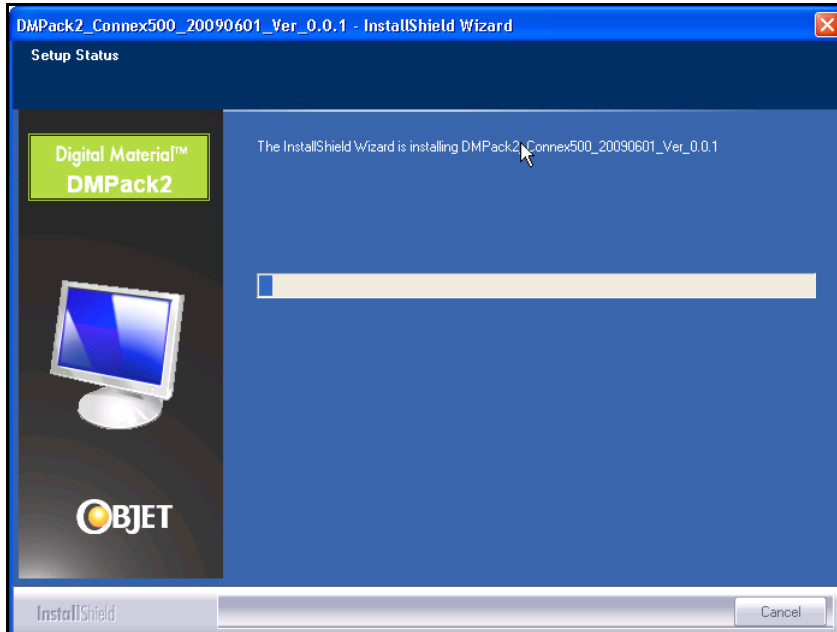
The *Preparing Setup* screen appears.



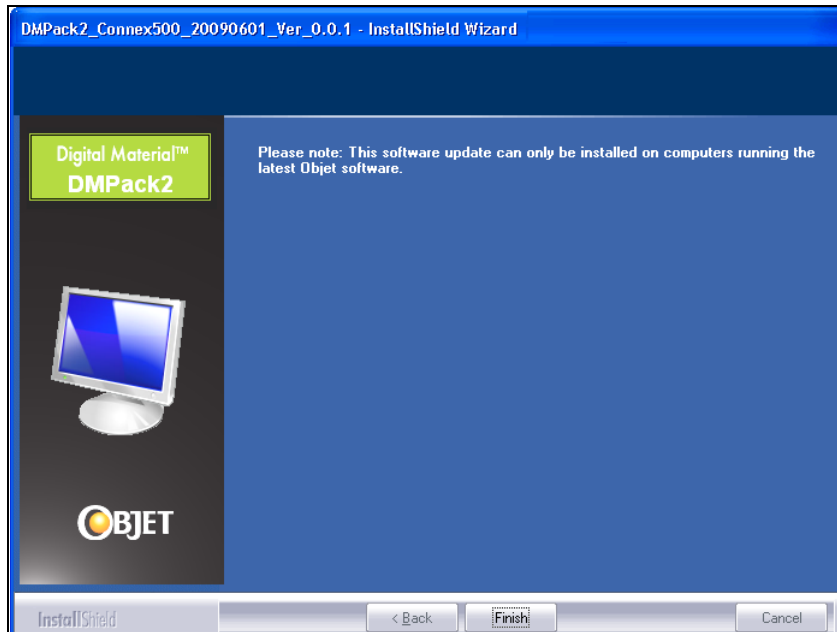
When the InstallShield wizard is ready, the *Welcome* screen appears.



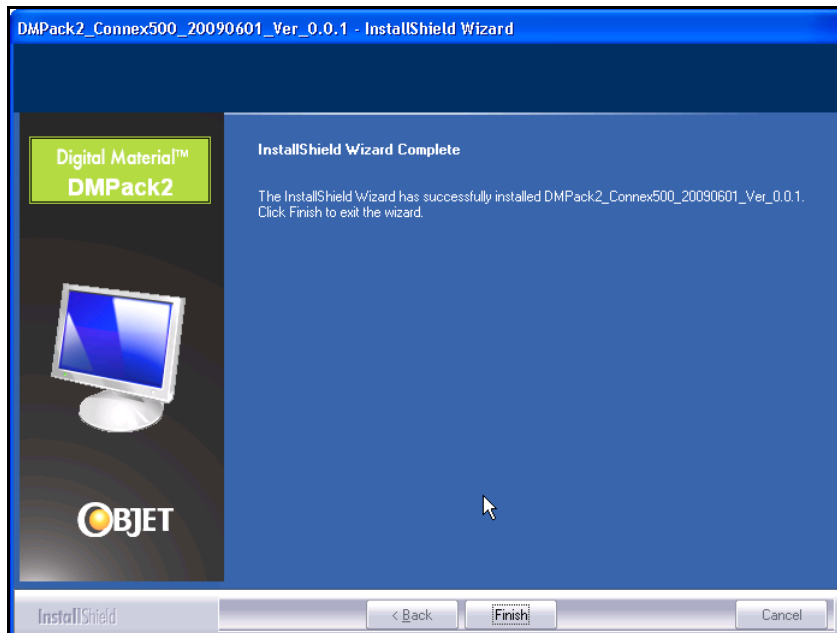
6. Click Next to run the installation wizard.
The installation begins showing the progress of the installation process.



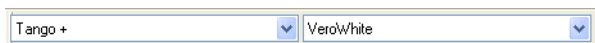
Note: If the following screen appears, click **Finish** to exit the wizard, install the latest version of Objet Studio and re-install the material software update.



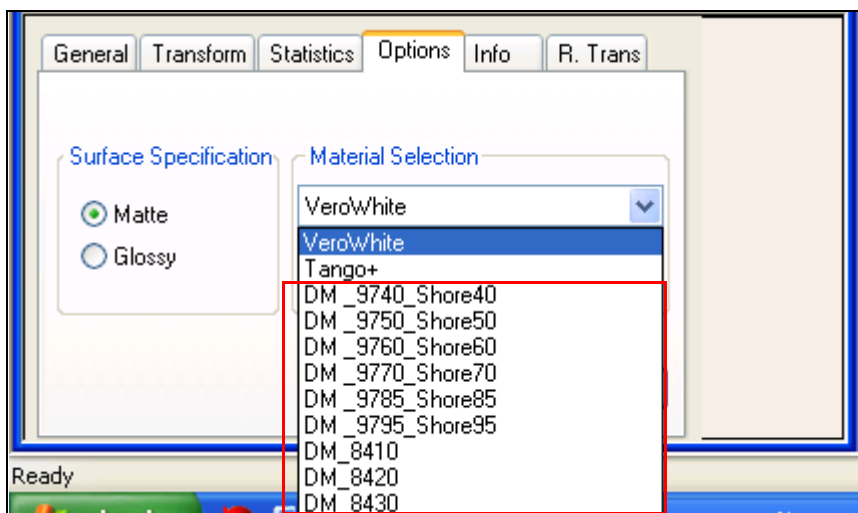
When the installation is complete, the final InstallShield wizard screen appears.



7. Click **Finish**.
8. Start the **Objet Studio** application.
9. In the model-material settings toolbar, display two appropriate model materials, for example, **Tango+** and **VeroWhite**.



10. From the *Object Properties* dialog box, select the *Options* tab.
11. Display the *Material Selection* drop-down menu. The new digital materials should be available for selection as shown below.



If you have any questions about the procedure in this document, contact your local **Objet specialist**.