



Objet Geometries Ltd

www.objet.com

[Customer Support](#)

Digital Material™ Package No. 1 Software Update for Connex500 Printers

1. Purpose

This document provides instructions for installing the DMPack1 software update for Connex500 printers (on server and client workstations only).

2. Background

Objet has introduced a new digital material package: DMPack1.

The DMPack1 software update makes nine digital material combinations available for use.

This software update enables printing parts with the following digital material combinations.

Printing Materials	New DM Combinations	Benefit
Primary: FullCure720 Secondary: TangoBlack	DM_7210_Trans25 DM_7220_Trans60 DM_7230_TransBlack	Rigid materials with new translucent shades
Primary: FullCure720 Secondary: VeroBlack	DM_Dots_7513 DM_Grid_7523	Rigid materials with new grid and dot patterns
Primary: DurusWhite Secondary: VeroWhite	DM_4310_DurusIvory	Rigid materials, DurusWhite based combinations, for new mechanical properties and shades
Primary: DurusWhite Secondary: VeroBlue	DM_4410_DurusBlue	
Primary: DurusWhite Secondary: VeroBlack	DM_4510_DurusBlack	
Primary: DurusWhite Secondary: FullCure720	DM_4710_DurusTrans20	

3. Special Instructions

1. The printer server and all client workstations must be updated.
Note: On client workstations, this material software update can also be used for preparing print jobs for Connex350 printers.
2. Ensure that the Objet Studio and printer control software versions meet the requirements listed on the Objet website at:
http://www.objet.com/Pages/Objet_Download_center/DMPack1_Connex500_20090125_Ver_0.0.1/
3. If you are installing this software update immediately after the installation of Objet Studio, you must open Job Manager at least once before you install this software update.
4. To fully benefit from the digital material combinations using DurusWhite, before you install this update, you must install the latest DurusWhite software update available at:
http://www.objet.com/Pages/Objet_Download_center/Software_Updates
5. When printing with DurusWhite—
 - To ensure system reliability, it is recommended that you insert the DurusWhite material cartridge into the Model 2 container housing.
 - The Material Replacement wizard must be performed every time a change to DurusWhite is made and every time when changing from DurusWhite.
 - When using DurusWhite, the print heads must be cleaned immediately after EVERY print job.
 - Purge time is reduced when using DurusWhite; that is, the printer purges more often.

4. New Features

The software update adds the new digital material combinations to the material selection list the Objet Studio software.

5. Known Bugs

None

6. Notes

None

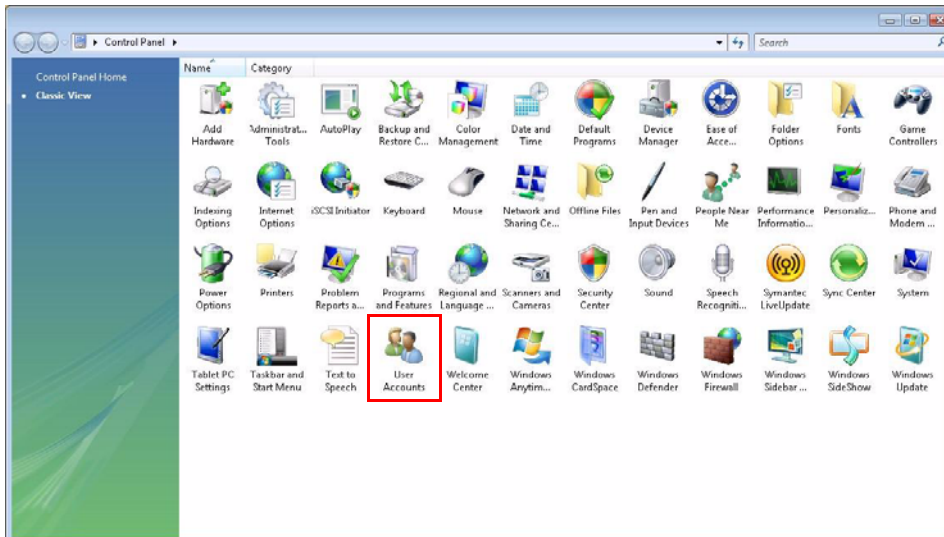
7. Installation Instructions

User Account Configuration (for Windows Vista® only)

Prior to installing this software update, you must perform the following configuration on all workstations running Windows Vista operating system.

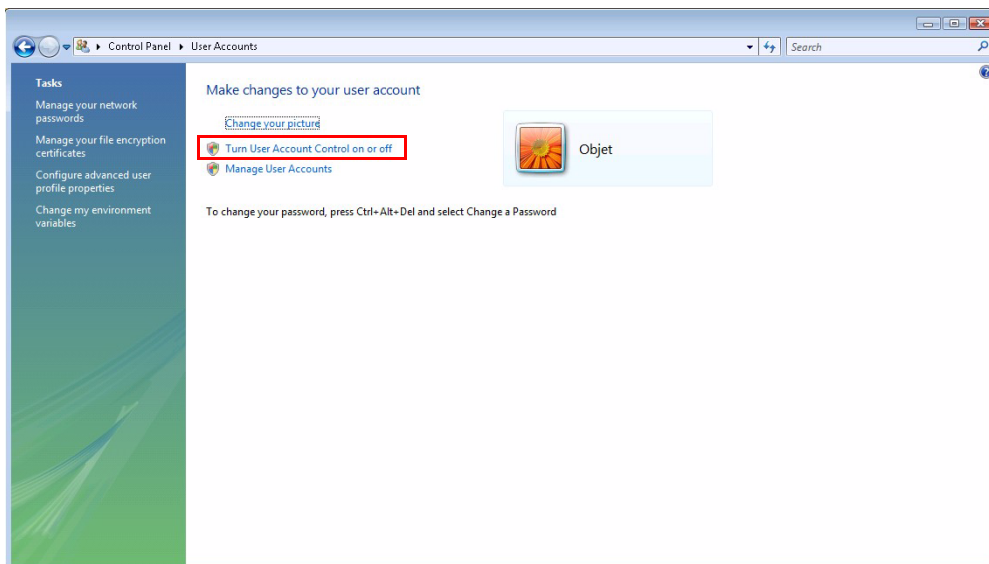
1. Save any open files and close all applications.
2. Open the Start menu and select Control Panel.

The *Control Panel* window appears.



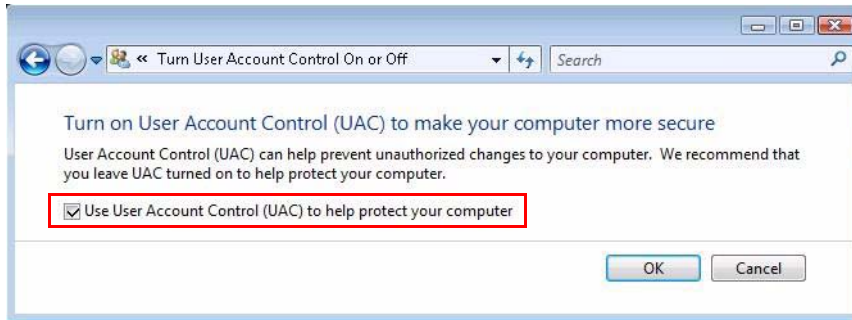
3. Select User Accounts.

The following window appears:



- Click "Turn User Account Control on or off".



The following window appears:

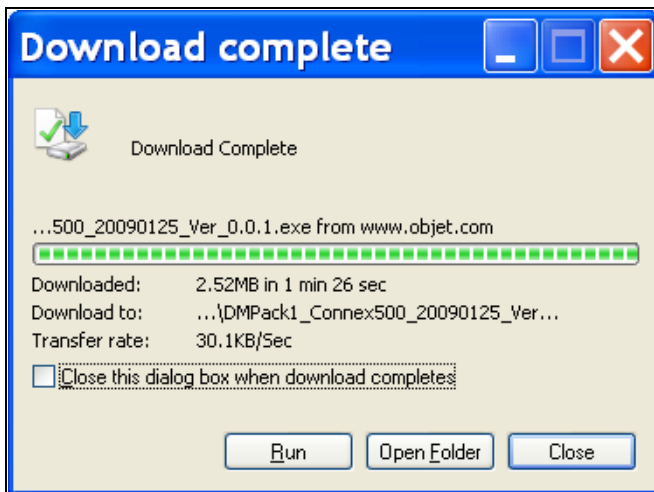


- Clear the checkbox and click OK.
- Restart the computer.

Instructions for Server and Client Workstations Only

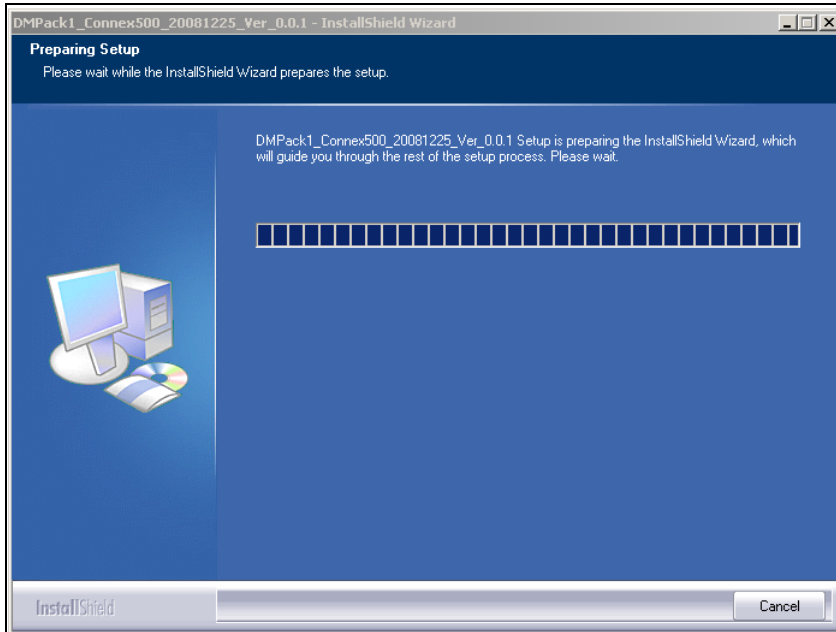
To install DMPack1 software update:

- Close the Objet Studio application.
- Click the *Stop Job Manager* icon  on the desktop.
or
In the taskbar, right click on the *Job Manager* icon  and select Stop Job Manager.
- Download the DMPack1 software update for Connex500.
- Save the *exe* file to a desired location. When the download is complete, the following screen appears.
- Save the *exe* file to a desired location. When the download is complete, the following screen appears.

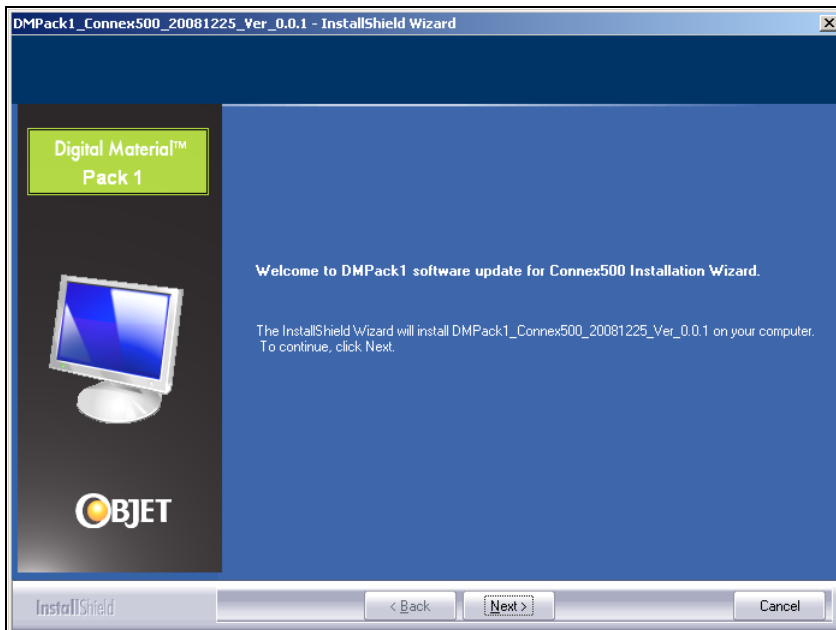


6. Click Run.

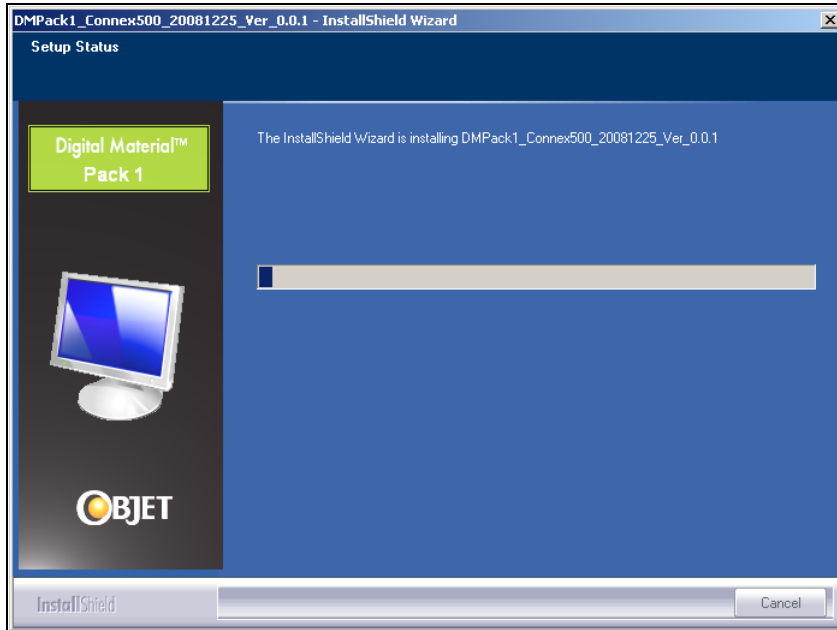
The *Preparing Setup* screen appears.



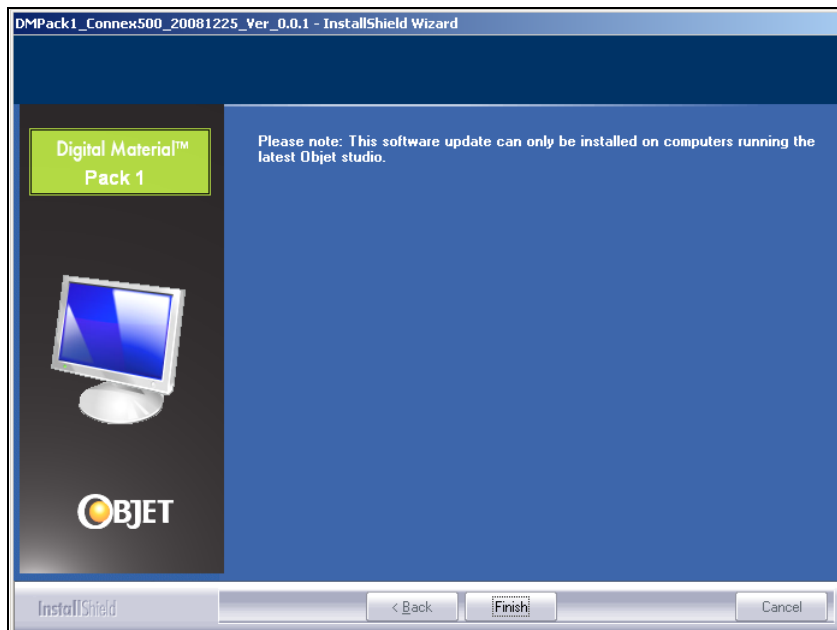
When the Installshield wizard is ready, the *Welcome* screen appears.



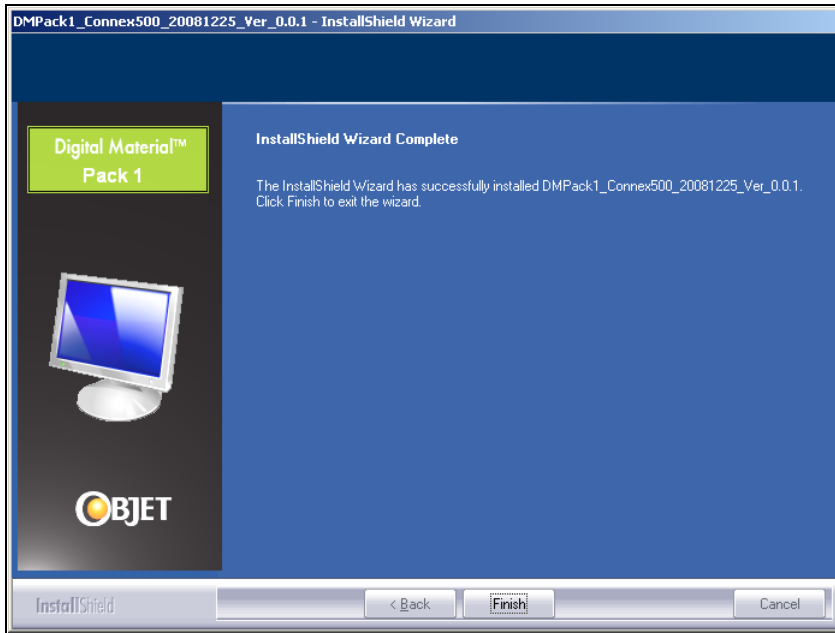
- Click Next to run the installation wizard.
The installation begins showing the progress of the installation process.



Note: If the following screen appears, click **Finish** to exit the wizard, install the latest version of Objet Studio and re-install the material software update.



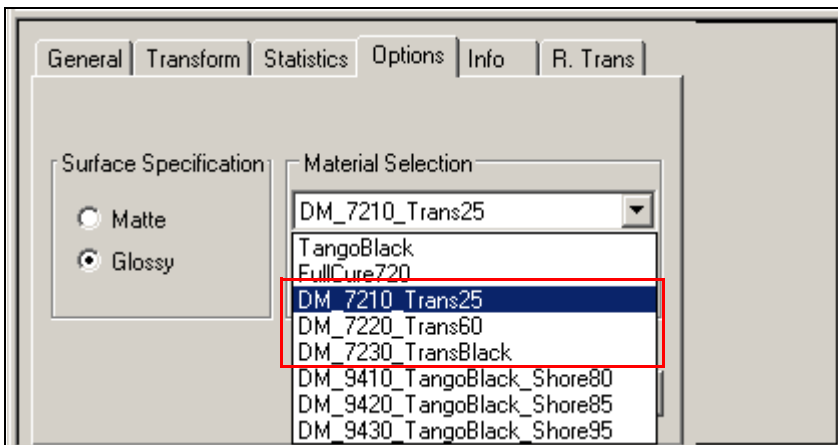
When the installation is complete, the final InstallShield wizard screen appears.



8. Click **Finish**.
9. Start the Objet Studio application.
10. In the model-material settings toolbar, display two appropriate model materials, for example, Fullcure720 and TangoBlack.



11. From the *Object Properties* dialog box, select the *Options* tab.
12. Display the Material Selection drop-down menu. The new digital materials should be available for selection as shown below.



If you have any questions about the procedure in this document, contact your local Objet specialist.