



Objet Geometries Ltd

www.objet.com

support@objet.com

VeroGray™ FullCure® 850 Material Software Update for Connex350 Printers

1. Purpose

This document provides instructions for installing the VeroGray material software update on server and client workstations.

2. Background

Objet has introduced a new model material: VeroGray–FullCure850, an opaque and rigid material.

This material provides excellent dimensional stability, detail visualization and surface quality, along with the Vero family's well-known benefits of high reliability and extended shelf life.

The VeroGray software update makes this material available for use.

3. Special Instructions

1. The printer server and all client workstations must be updated.
2. Ensure that the Objet Studio version meets the requirements given in the material software update information published on the Objet website.
3. Ensure that printer control software version 37.00.032 or later is installed.
4. If you are installing this software update immediately after the installation of Objet Studio, you must open Job Manager at least once before you install this software update.

4. New Features

The software update adds VeroGray to the material list in Objet Studio.

5. Known Bugs

None

6. Notes

1. VeroGray comes in 3.6 kg cartridges.

Use the following part numbers when ordering VeroGray.

Part Number	Description	Printer
OBJ-03243	Single 3.6 kg cartridges	Eden260V/330/350/350V/500V and Connex350/500
OBJ-03244	Pack of three 3.6 kg cartridges	Eden260V/330/350/350V/500V and Connex350/500

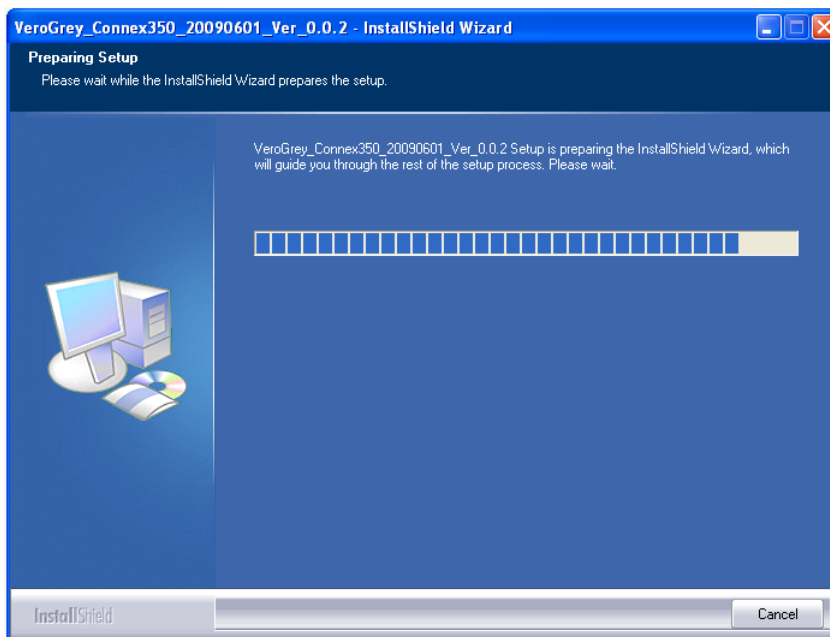
2. VeroGray can only be used in those locations which meet Objet’s specifications for temperature and humidity according to Objet’s Site Preparation documentation.

7. Installation Instructions

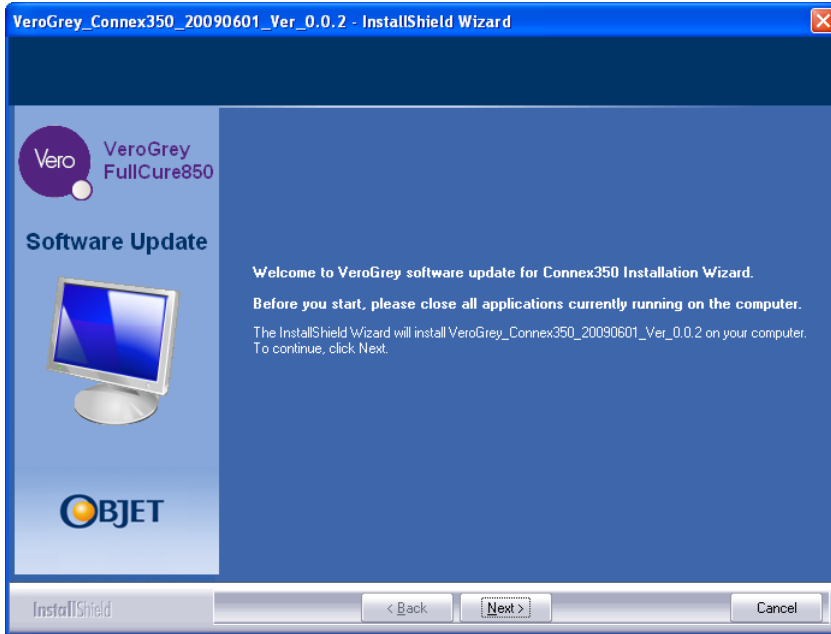
Server and Client Workstations

To install the software update:

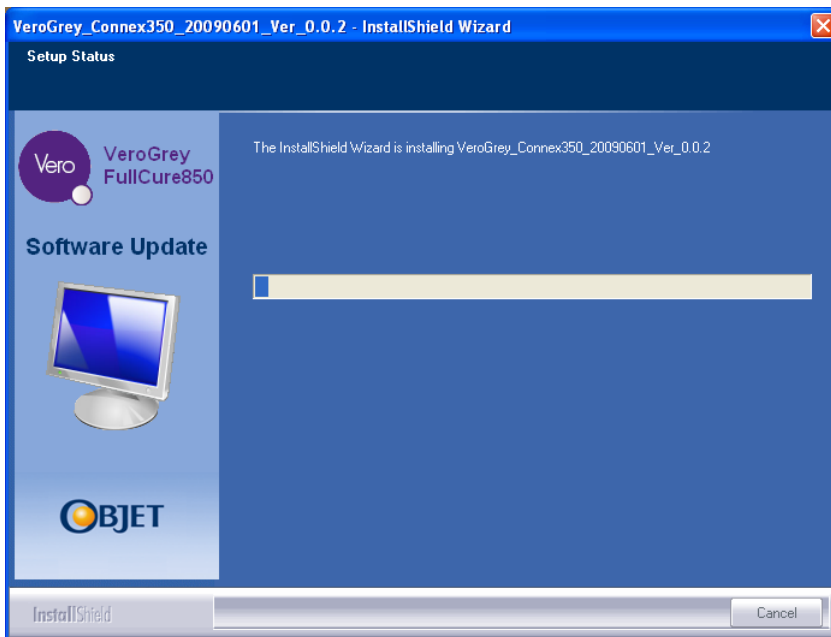
1. Make sure the Objet Studio application is closed.
2. Download the material software update.
3. Extract the files from the zipped folder.
4. Double-click the *exe* file icon. The *Preparing Setup* screen appears.



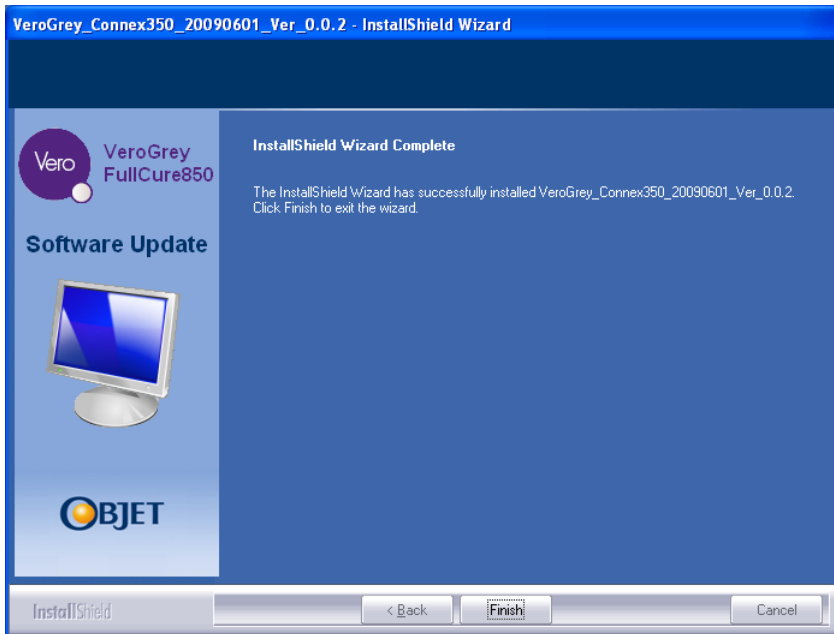
When the InstallShield wizard is ready, the *Welcome* screen appears.



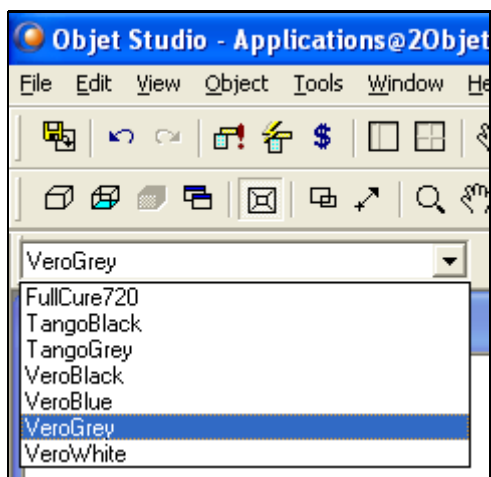
5. Click Next to run the installation wizard.
The installation begins showing the progress of the installation process.



When the installation is complete, the final InstallShield wizard screen appears.



6. Click **Finish** to exit the wizard.
7. Start the Objet Studio application and open the model-material drop-down menu. The material should be available for selection.



If you have any questions about the procedure in this document, contact your local Objet specialist.