



Objet Geometries Ltd

www.objet.com

support@objet.com

DurusWhite™ FullCure® 430 Material Software Update for Connex500 Printers

1. Purpose

This document provides instructions for installing the DurusWhite software update on Connex500 printers.

2. Background

This software update makes Duruswhite—FullCure430, a polypropylene-like material, available for use.

3. Special Instructions

1. The printer server, all client workstations, and the printer computer must be updated.
2. Ensure that the Objet Studio and printer control software versions meet the requirements given in the material software update information published on the Objet website.
3. To ensure system reliability, it is recommended that you insert the DurusWhite material cartridge into the Model 2 container housing.
4. The Resin Replacement wizard must be performed every time a change to DurusWhite is made and every time when changing from DurusWhite.
5. When using DurusWhite, the print heads must be cleaned immediately after EVERY print job.
There is a new tag fastened to the handle of the DurusWhite cartridges, which stresses the necessity to clean the print heads immediately after printing models with DurusWhite.



6. Purge time is reduced when using DurusWhite; that is, the printer purges more often.

4. New Features

The software update adds DurusWhite to the material list in both the Objet Studio and the printer control software.

5. Known Bugs

None

6. Notes

1. DurusWhite comes in weights of:

- 1.44 kg
- 2.0 kg
- 3.6 kg

Use the following part numbers when ordering DurusWhite.

Part Number	Description	Printer
OBJ-02240	Single 2.0 kg cartridges	Eden250/260/330
OBJ-02241	Pack of four 2.0.kg cartridges	Eden250/260/330
OBJ-03264	Single 1.44 kg (comes in 3.6 kg casing)	Eden260V/330/350/350V/500V and Connex500
OBJ-03226	Single 3.6 kg cartridges	Eden260V/330/350/350V/500V and Connex500
OBJ-03227	Pack of three 3.6.kg cartridges	Eden260V/330/350/350V/500V and Connex500

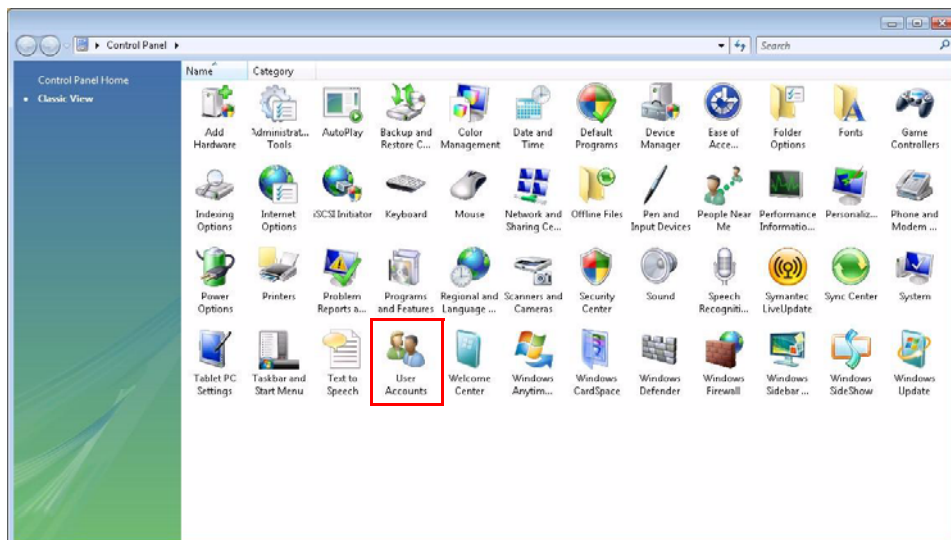
2. This software update does not support Digital Material™ combinations.

7. User Account Configuration (for Windows Vista® only)

Prior to installing this software update, you must perform the following configuration on the printer computer and all workstations running Windows Vista operating system.

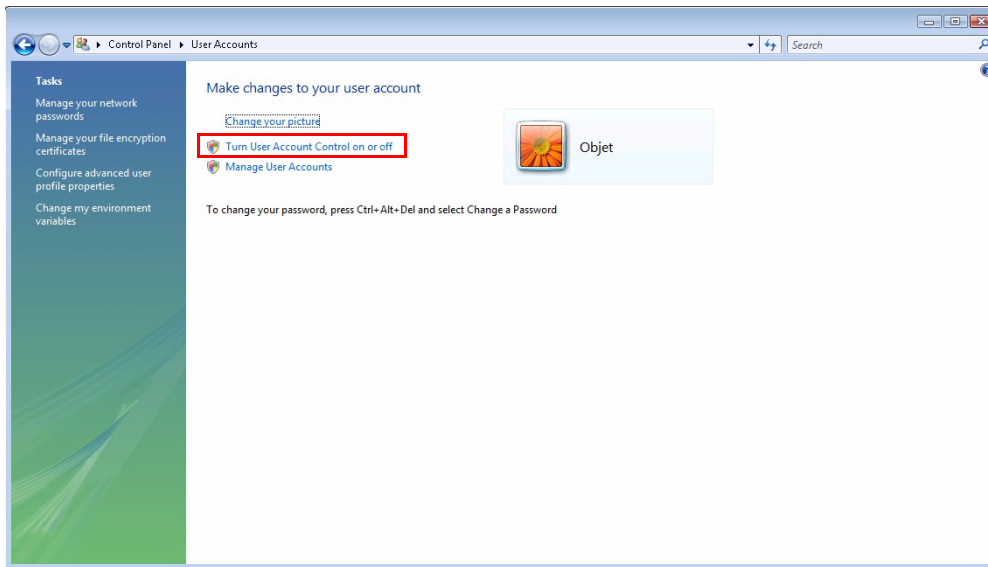
1. Save any open files and close all applications.
2. Open the **Start** menu and select **Control Panel**.

The *Control Panel* window appears.



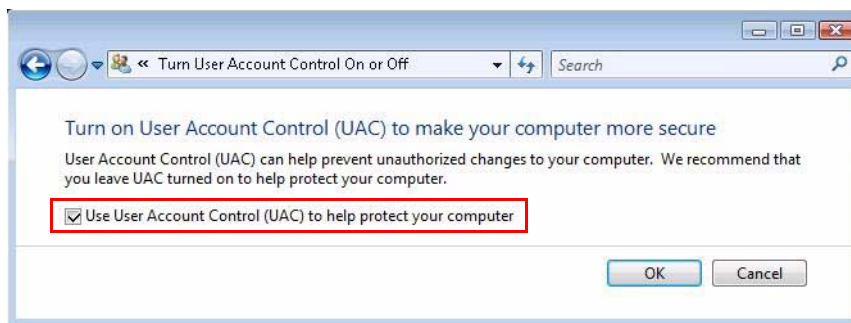
3. Select User Accounts.

The following window appears:



4. Click "Turn User Account Control on or off".

The following window appears:



5. Clear the checkbox and click OK.

6. Restart the computer.

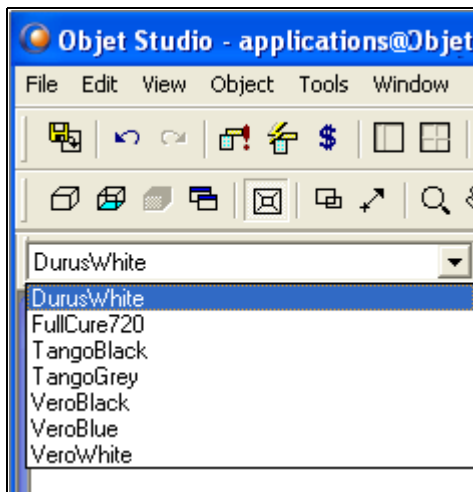
7. Installation Instructions

Server and Client Workstations

1. Make sure the Objet Studio application is off.
2. Double-click the *exe* file icon. When the following screen appears, Objet Studio is updated to support DurusWhite.



3. Start Objet Studio application and open the model-material drop-down menu. DurusWhite material should be available for selection.



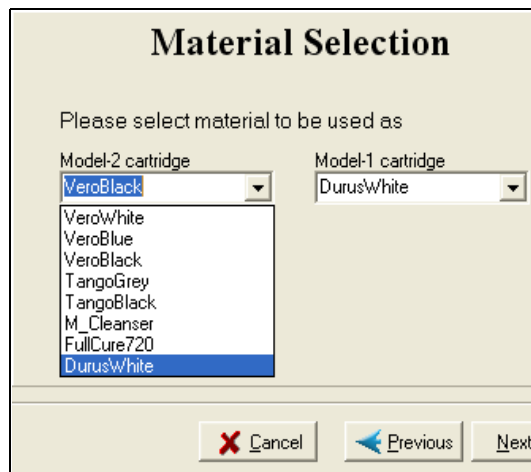
Instructions for Printer Computer

1. Make sure the printer control application is off.
2. Double-click on the exe file to run the update installation program.

When the following screen appears, the printer control application is updated to support DurusWhite.



3. Start the printer control application and start the Material Replacement wizard.
4. Click **Next**. The Material Selection screen opens. The model-material drop-down menu should display DurusWhite as follows:



5. Click **Cancel** to close the wizard.

If you have any questions about the procedure in this document, contact your local Objet specialist.