



Objet Geometries Ltd

www.objet.com

[Customer Support](#)

TangoBlackPlus™ FullCure®980 Material Software Update for Connex500 Printers

1. Purpose

This document provides instructions for installing the TangoBlackPlus material software update on Connex500 printers.

2. Background

Objet's TangoBlackPlus model material is a rubber-like material with an exceptional elongation at break of 218% and Shore Scale A 27.

The TangoBlackPlus material software update makes this material available for use.

3. Special Instructions

1. The server, all client workstations, and the printer computer must be updated.
2. Ensure that the Objet Studio version meets the requirements given in the material software update information published on the Objet website.
3. Ensure that printer control software version 57.00.032 or later is installed.
4. If you are installing this software update immediately after the installation of Objet Studio, you must open Job Manager at least once before you install this software update.
5. Models can be printed in **High Speed** and **Digital Materials** modes only.

4. New Features

The software update adds TangoBlackPlus to the material list in both the Objet Studio and the printer control software.

- Only one UV lamp is activated when printing with this material in Digital Materials mode.
- The software update adds TangoBlackPlus to the material list in Objet Studio.

5. Known Bugs

None

6. Notes

1. TangoBlackPlus comes in weights of:
 - 1.44 kg
 - 3.6 kg

Use the following part numbers when ordering TangoBlackPlus.

Part Number	Description	Printer
OBJ-03263	Single 1.44 kg (comes in 3.6 kg casing)	Eden260V/330/350/350V/500V and Connex350/500
OBJ-03231	Single 3.6 kg cartridges	Eden260V/330/350/350V/500V and Connex350/500
OBJ-03232	Pack of three 3.6 kg cartridges	Eden260V/330/350/350V/500V and Connex350/500

2. TangoBlackPlus can only be used in those locations which meet Objet’s specifications for temperature and humidity according to Objet’s Site Preparation documentation.

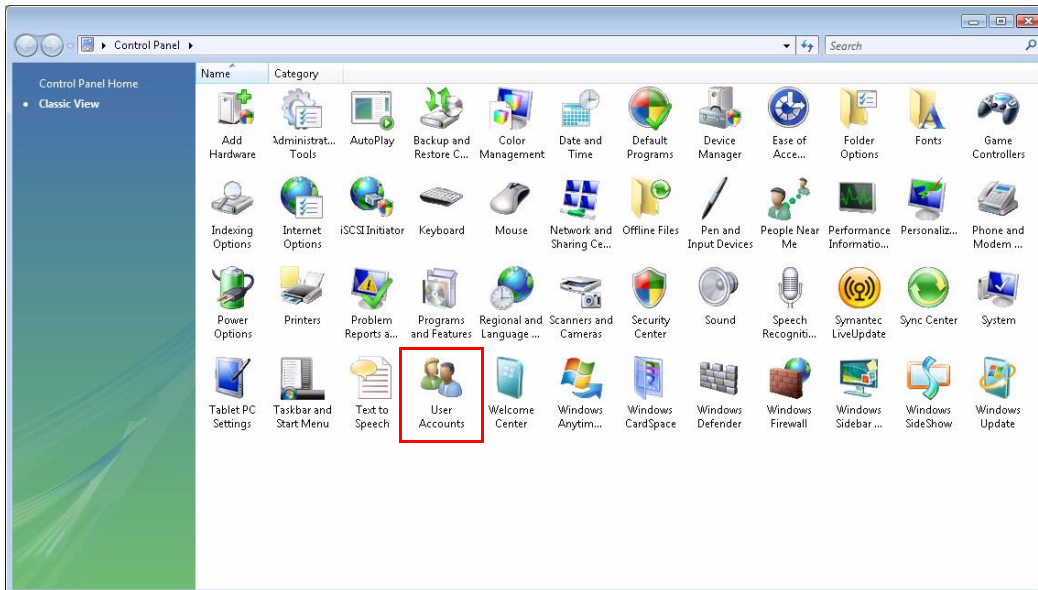
7. Installation Instructions

User Account Configuration (for Windows Vista only)

Prior to installing this software update, you must perform the following configuration on the printer computer and all workstations running Windows Vista operating system.

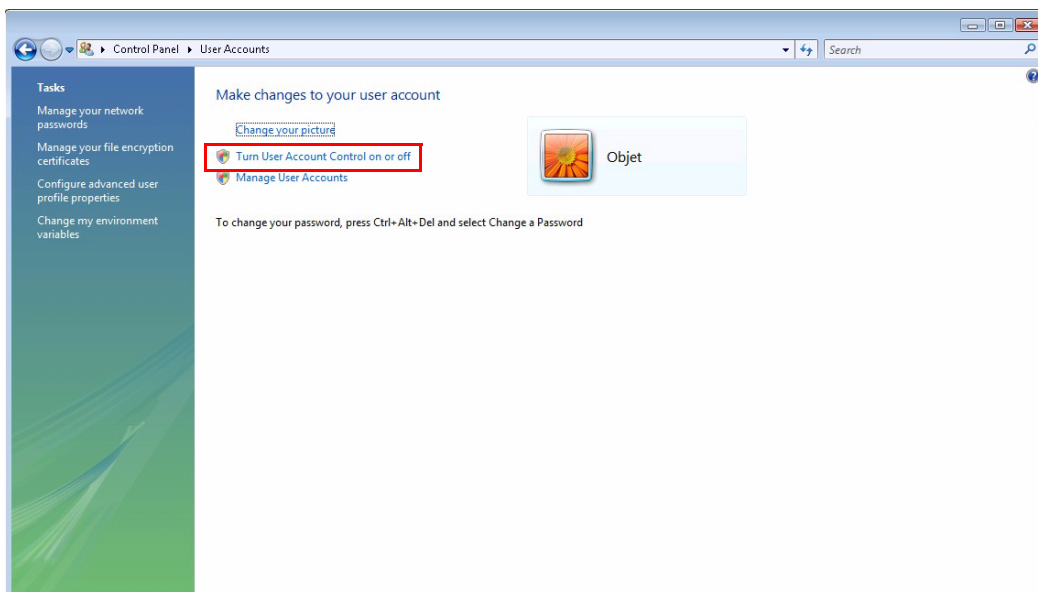
1. Save any open files and close all applications.
2. Open the **Start** menu and select **Control Panel**.

The *Control Panel* window appears.



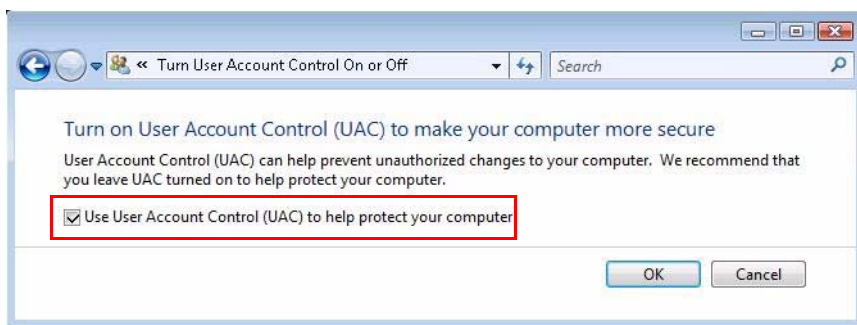
3. Select User Accounts.

The following window appears:



4. Click "Turn User Account Control on or off".

The following window appears:





5. Clear the checkbox and click OK.

6. Restart the computer.

Instructions for Server and Client Workstations

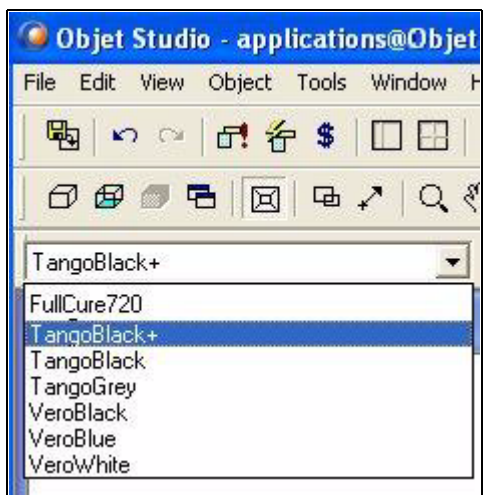
To install the TangoBlackPlus software update:

1. Close the Objet Studio application.
2. Click the *Stop Job Manager* icon  on the desktop.
or
In the taskbar, right click on the *Job Manager* icon  and select **Stop Job Manager**.
3. Download the TangoBlackPlus software update for Connex500.
4. Extract the files from the zipped folder.
5. Double-click the *setup.exe* file to run the update installation program.

When the following screen appears, Objet Studio is updated to support TangoBlackPlus.



6. Start Objet Studio application and open the model-material drop-down menu. TangoBlackPlus material should be available for selection.



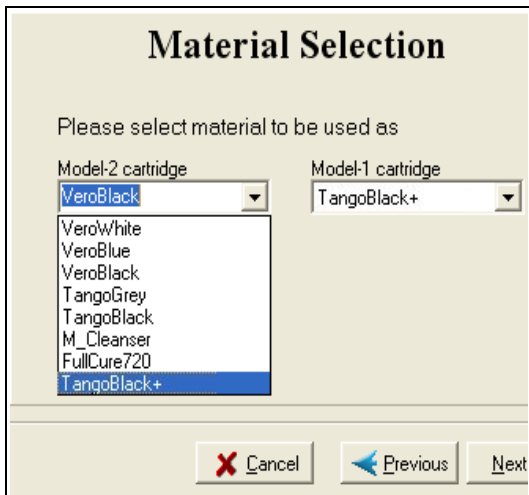
Instructions for Printer Computer

1. Close the printer control application.
2. Copy the material software update *exe* file from the printer server to a USB flash drive, and remove the USB flash drive.
3. Connect the USB flash drive to the USB connector on the Connex500 printer.
4. Copy the material software update *exe* file to the printer computer desktop.
5. Remove the USB flash drive.
6. Double-click on the *exe* file to run the update installation program.

When the following screen appears, the printer control application is updated to support TangoBlackPlus.



7. Start the printer control application and start the Material Replacement wizard.
8. Click **Next**. The Material Selection screen opens.
The model-material drop-down menu should display TangoBlackPlus as follows:



9. Click **Cancel** to close the wizard.

If you have any questions about the procedure in this document, contact your local Objet specialist.